




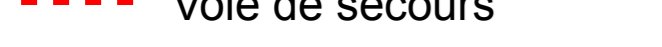



REPUBLIQUE FRANÇAISE  
PREFECTURE DU VAR

### COMMUNE DE FREJUS

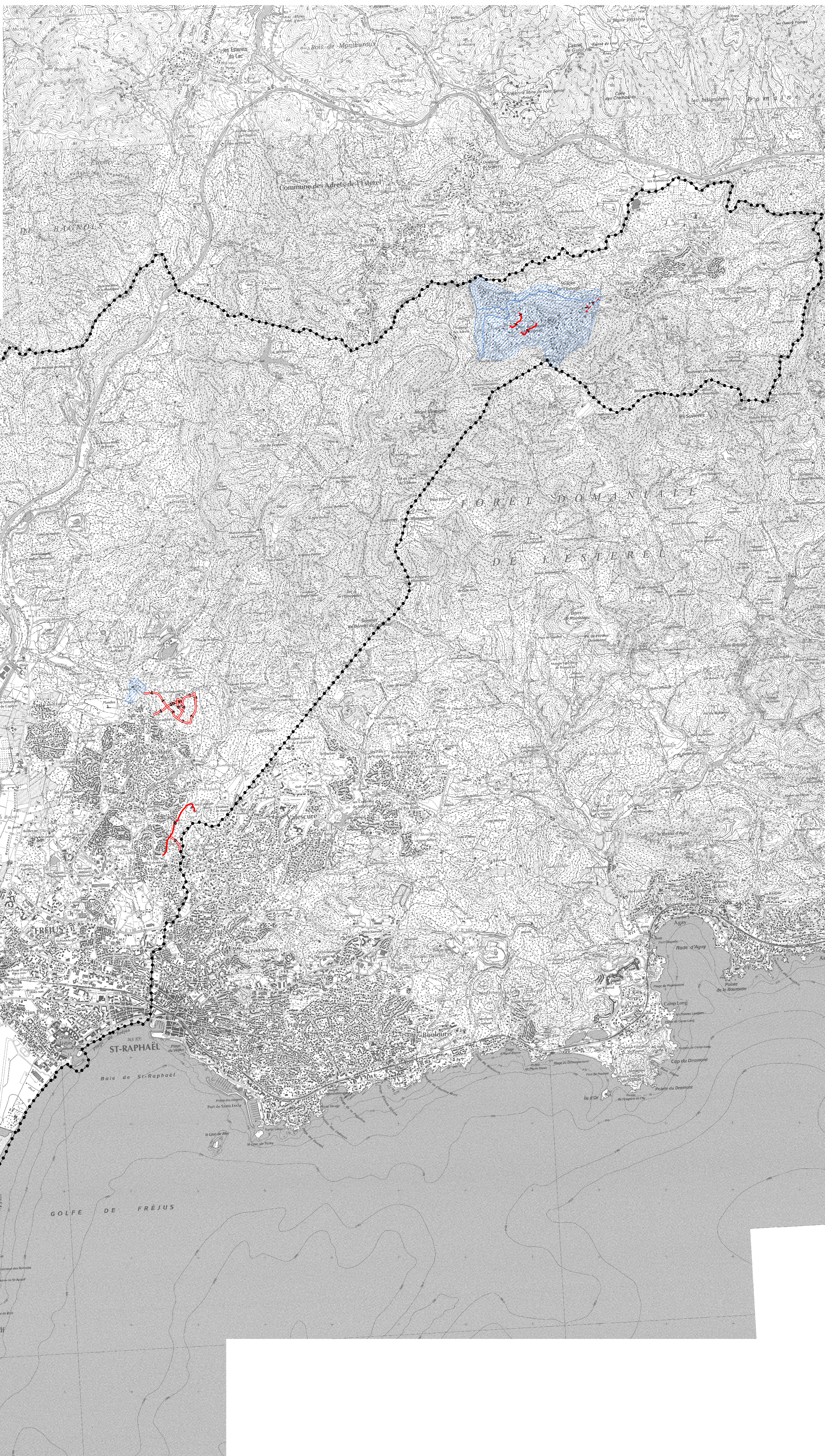
#### PLAN de PREVENTION du RISQUE INCENDIES de FORET

##### LOCALISATION DES EQUIPEMENTS DE PROTECTION COLLECTIVE DES ZONES B0

-  Voie d'accès
-  Voie périphérique
-  Voie de secours
-  Coupures de combustible
-  Contour de la commune



0 200 400 800 1200 1600 Mètres  
1:20 000



Source : Fond topographique IGN © IGN