



# ALEA RETRAIT/GONFLEMENT DES ARGILES

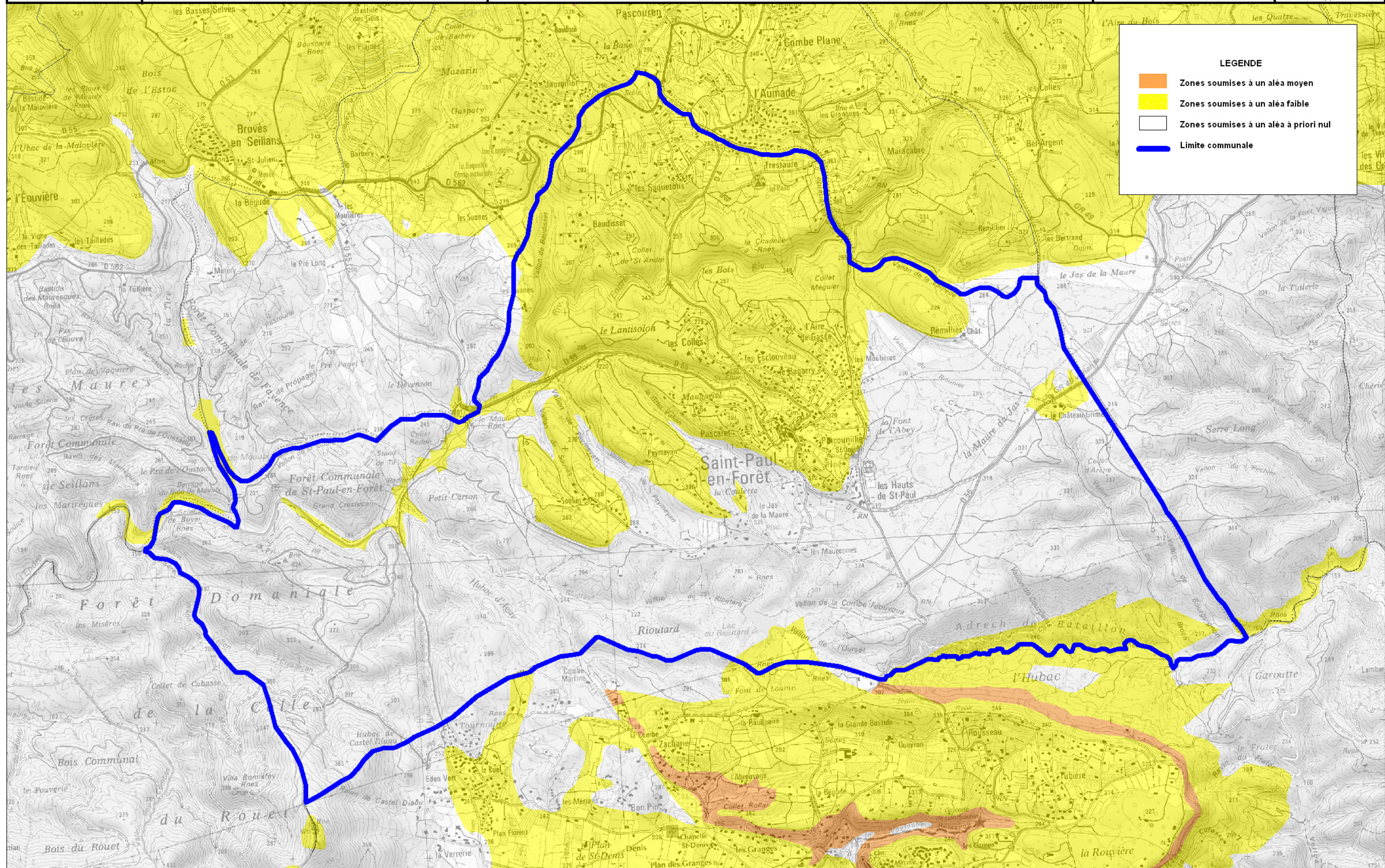
## Commune : SAINT-PAUL-EN-FORET

OCTOBRE 2008





Echelle : 1/ 25000

Source : BRGM - Avril 2007  
SCAN25©IGN2007

N



### LEGENDE

-  Zones soumises à un aléa moyen
-  Zones soumises à un aléa faible
-  Zones soumises à un aléa à priori nul
-  Limite communale